

ATLAS DE PARASITOLOGIA MEDICA



CONTENIDO

1. **AMIBAS**
 - Entamoeba coli
 - Entamoeba histolytica
2. **CILIADOS**
 - Balantidium coli
3. **CESTODOS**
 - Hymenolepis diminuta
 - Hymenolepis nana
 - Taenia saginata
 - Taenia solium
4. **NEMATODOS**
 - Ascaris lumbricoides
 - Enterobius vermicularis
 - Strongyloides stercoralis
 - Trichinella spiralis
 - Trichuris trichiura
5. **UNCINARIAS**
 - Ancylostoma duodenale
 - Necator americanus
6. **TREMATODOS**
 - Fasciola hepática
 - Schistosoma sp
7. **COCCIDIOS o ESPOROZOOS**
 - Cryptosporidium sp
 - Cyclospora cayetanensis
 - Isospora belli
8. **Plasmodium sp**
 - Plasmodium falciparum
 - Plasmodium malariae
 - Plasmodium vivax
 - Plasmodium ovale.
9. **Sarcocystis sp.**
 - Toxoplasma gondii
10. **FLAGELADOS**
 - Chilomastix mesnili
 - Dientamoeba fragilis
 - Giardia lamblia
11. **Leishmania sp**
 - Leishmania braziliensis
 - Leishmania donovani
 - Leishmania mexicana
12. **Trichomona sp**
 - Trichomonas vaginalis
- 13 **Trypanosoma sp.**
 - Trypanosoma cruzi

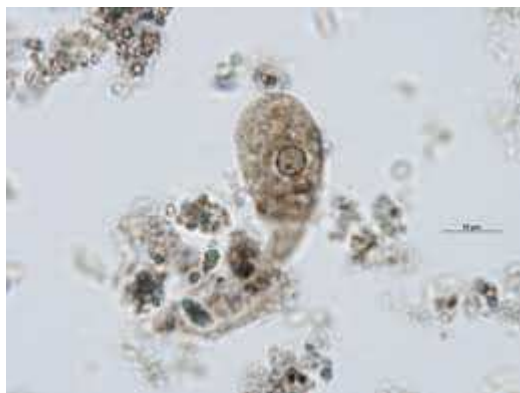
1. AMIBAS

Entamoeba coli

Quistes



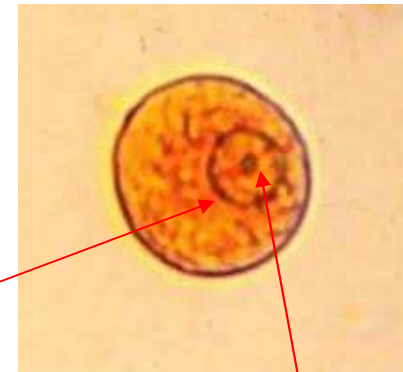
Trofozoito



aterres@qualitat.cc

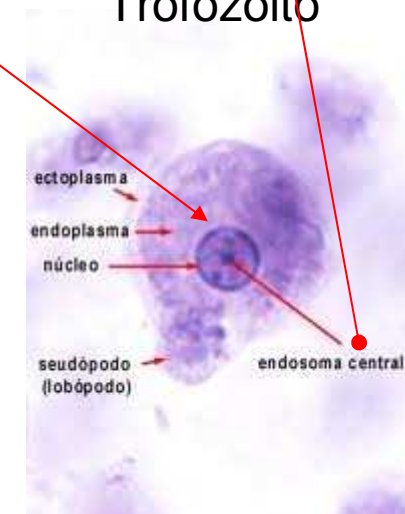
Entamoeba histolytica

Contiene hasta 4 núcleos,

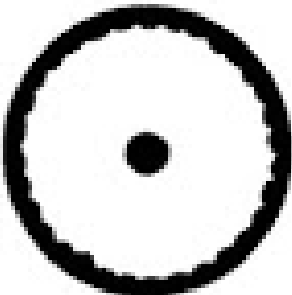
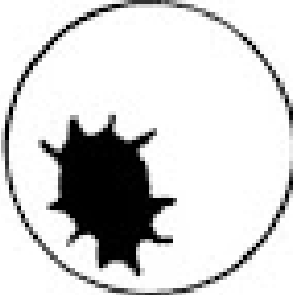
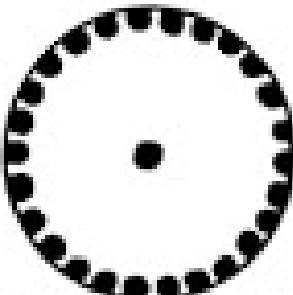
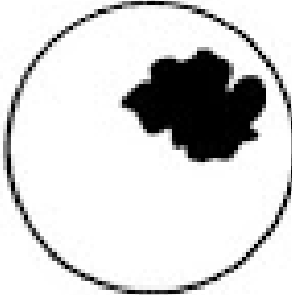
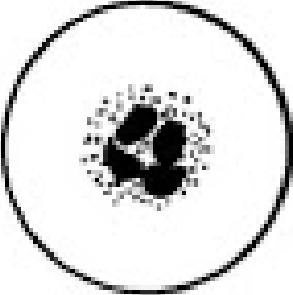



CROMATINA
PERIFERICA
REGULAR

Trofozoito

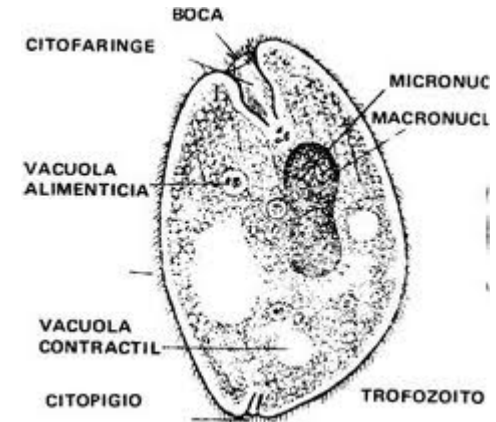
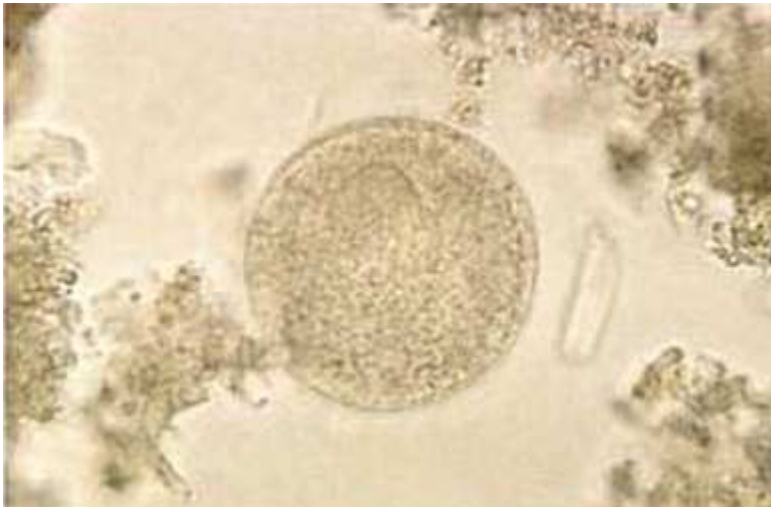


www.qualitat.cc

ANIMAS HUMANAS ESQUEMA DE LOS NUCLEOS SEGUN GENERO	GENERO ENTAMOBA ESQUEMA DE LOS NUCLEOS SEGUN ESPECIE
 <p data-bbox="568 788 719 815"><i>Entamoeba</i></p>  <p data-bbox="978 788 1128 815"><i>Iodamoeba</i></p>	 <p data-bbox="1359 788 1666 815"><i>E. histolytica / E. dispar</i></p>
 <p data-bbox="568 1139 719 1166"><i>Endolimax</i></p>  <p data-bbox="978 1139 1128 1166"><i>Dietsamoeba</i></p>	 <p data-bbox="1449 1139 1554 1166"><i>E. coli</i></p>

2. CILIADOS

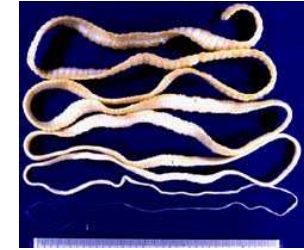
- **Balantidium coli**



cilios



3. CESTODOS

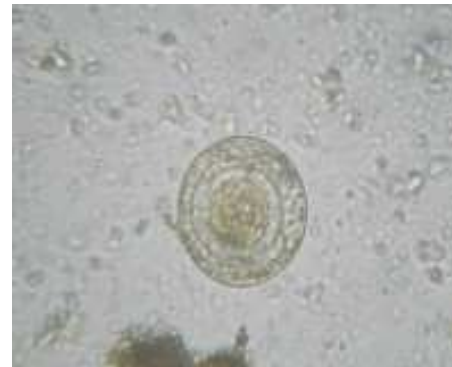


Hymenolepis diminuta

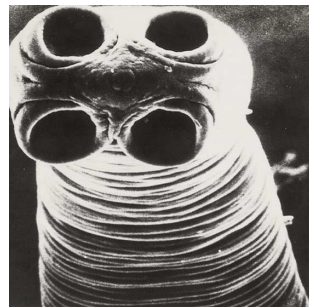
Núcleo hexacanto



Hymenolepis nana



Taenia saginata



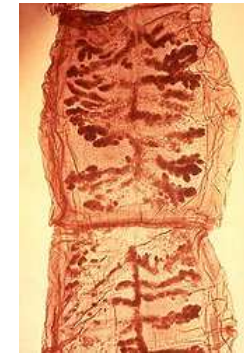
aterres@qualitat.cc

Taenia solium

Ova.sp



www.qualitat.cc



4. NEMATODOS

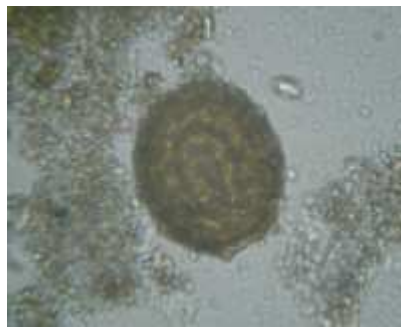


Ascaris lumbricoides

infértil



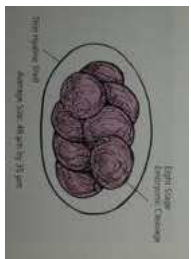
fértil



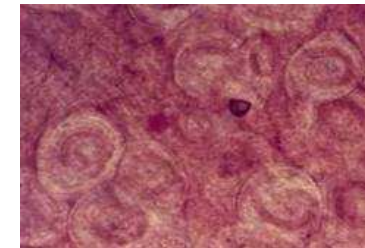
Enterobius vermicularis



Strongyloides stercoralis



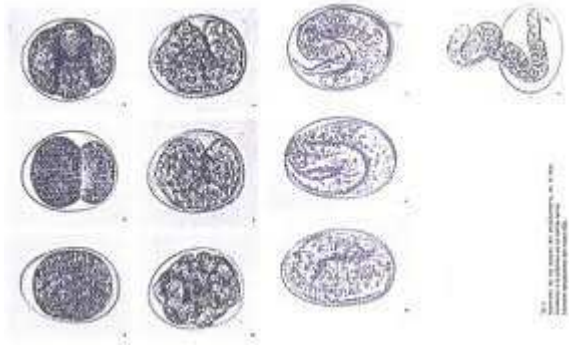
Trichinella spiralis



Trichuris trichiura



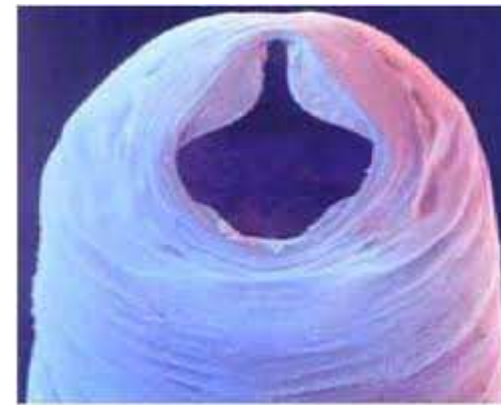
5. UNCINARIAS



Ancylostoma duodenale



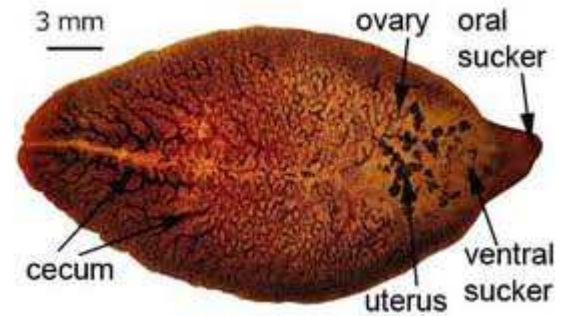
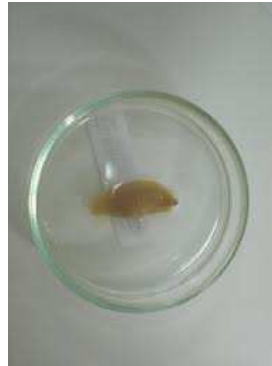
Necator americanus



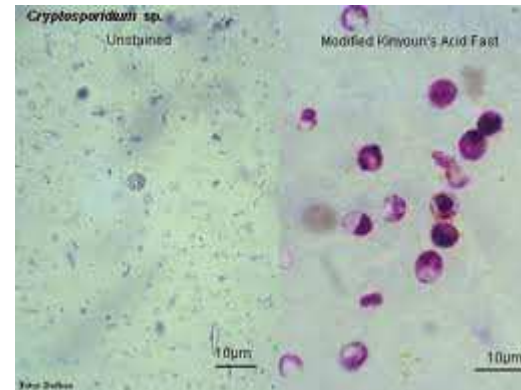
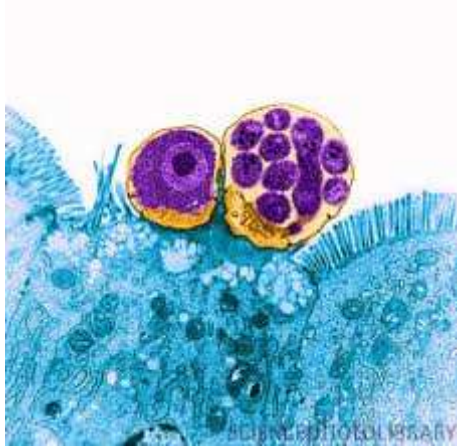
6. TREMATODOS

- **Fasciola hepática**

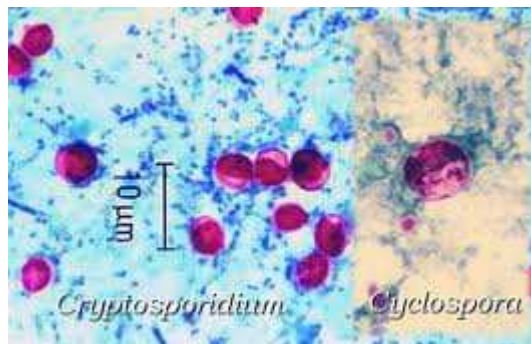
Ova
operculado



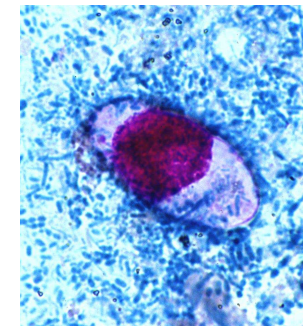
7. COCCIDIOS o ESPOROZOOS

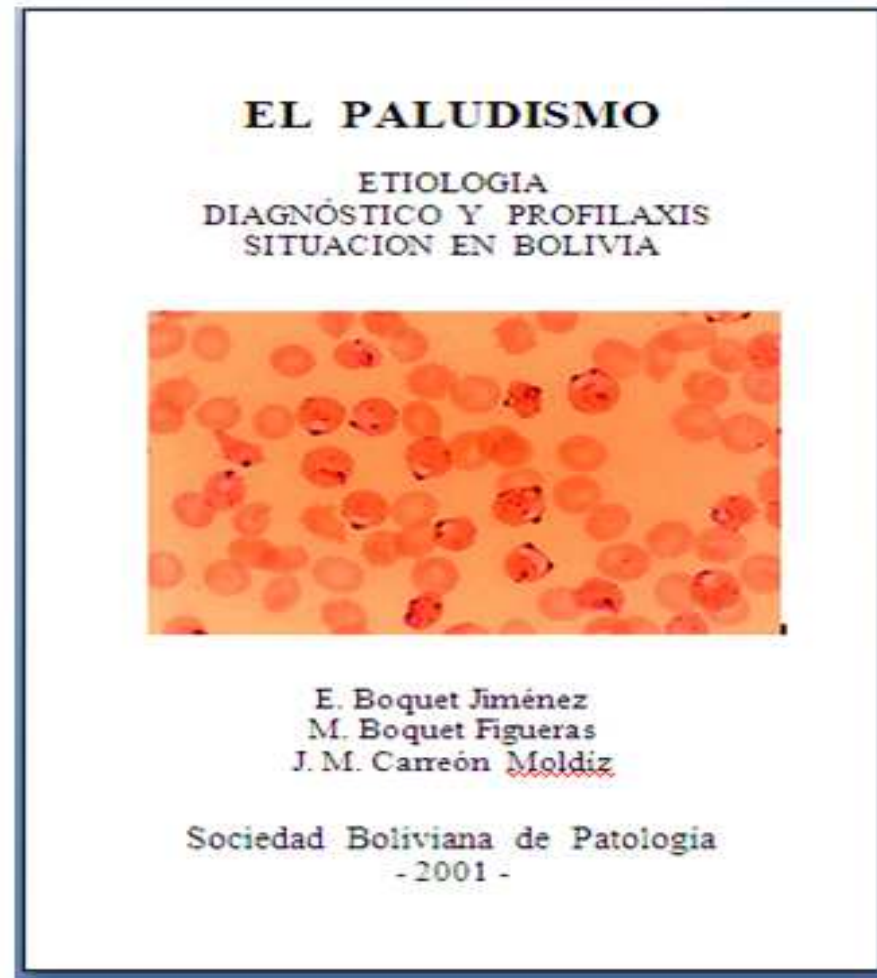


Cryptosporidium sp. Cyclospora sp



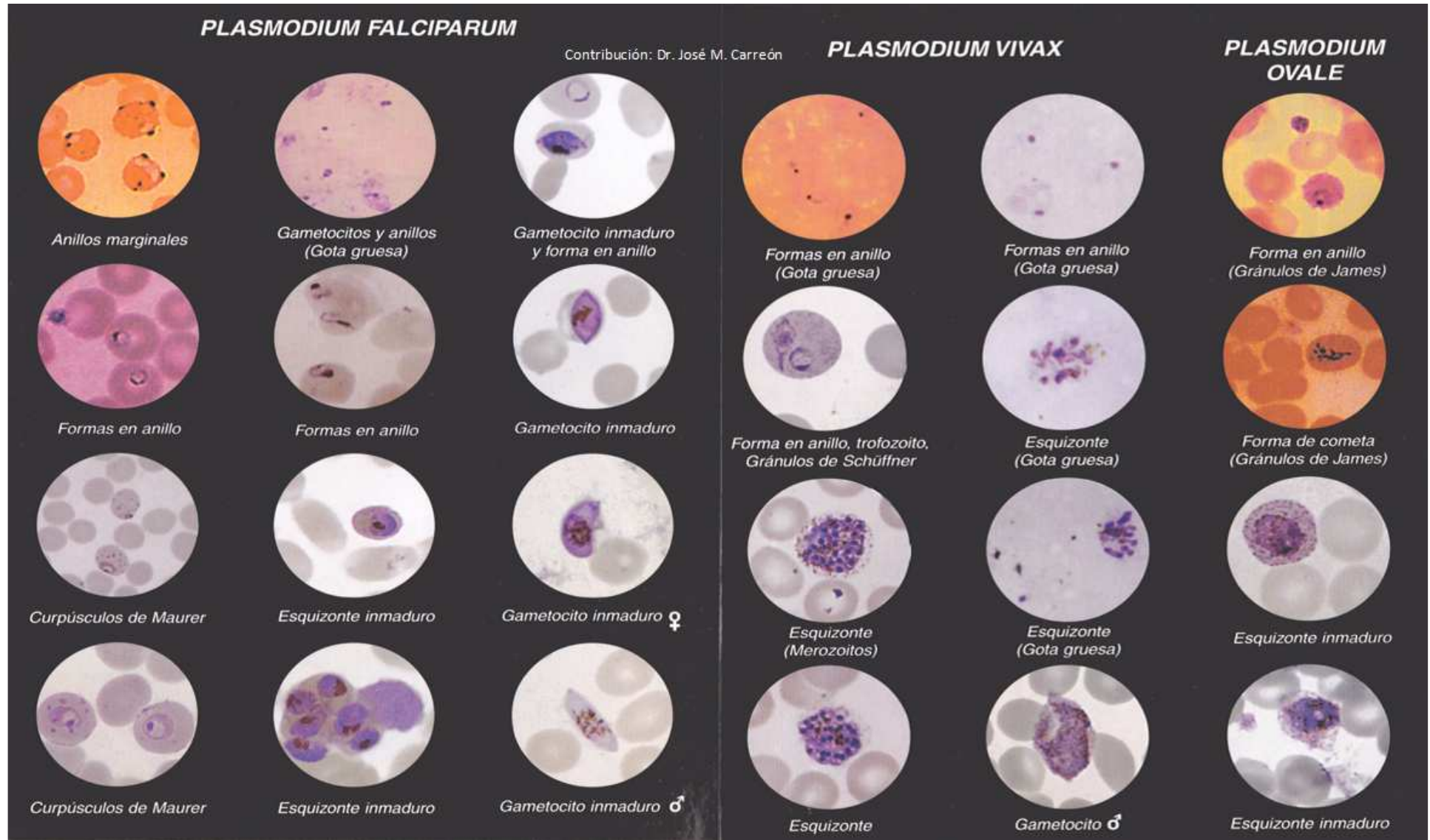
Isospora belli





Ernest Boquet, Maritxell Boquet, José Carreón EL PALUDISMO
Etiología, Diagnóstico y Profilaxis. Situación en Bolivia. Sociedad
Boliviana de Patología. 2001, 73pp.

8. Plasmodium sp



CONTRIBUCION: Dr. José M. Carreón Moldiz (Bolivia)

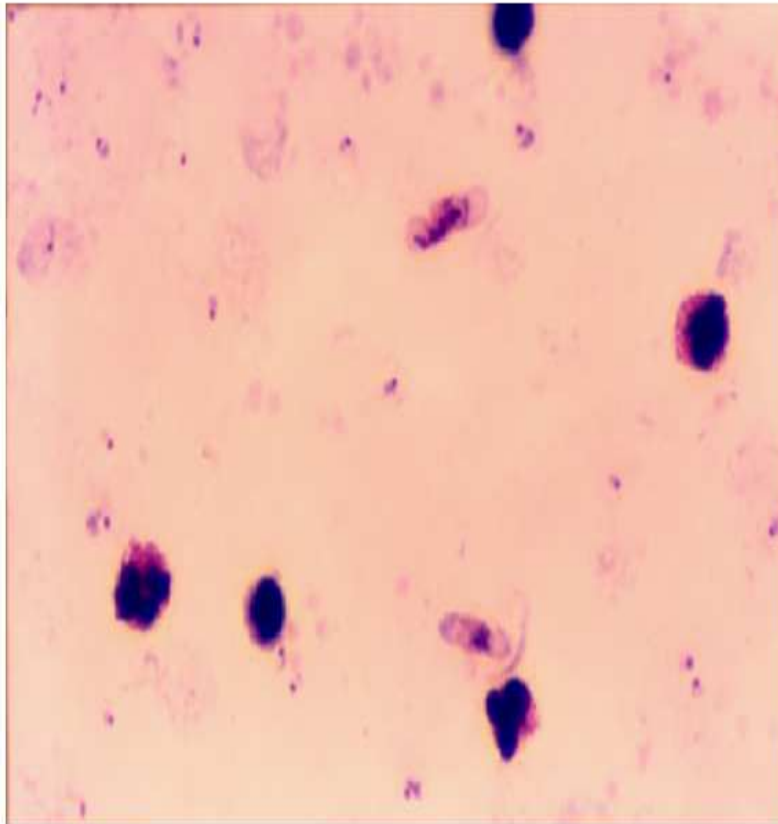


Foto 1 – Gota gruesa. Gametocitos y anillos de *Plasmodium falciparum*

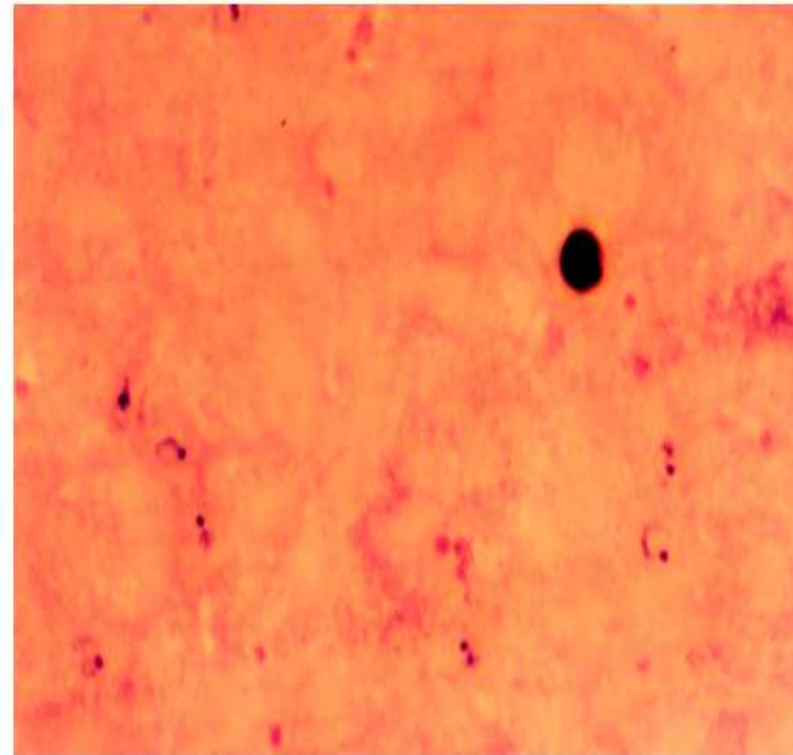


Foto 2 – Gota gruesa. Anillos de *Plasmodium vivax*. En casos como este, la única forma de determinar la especie es a partir de la extensión sanguínea

CONTRIBUCION: Dr. José M. Carreón Moldiz (Bolivia)

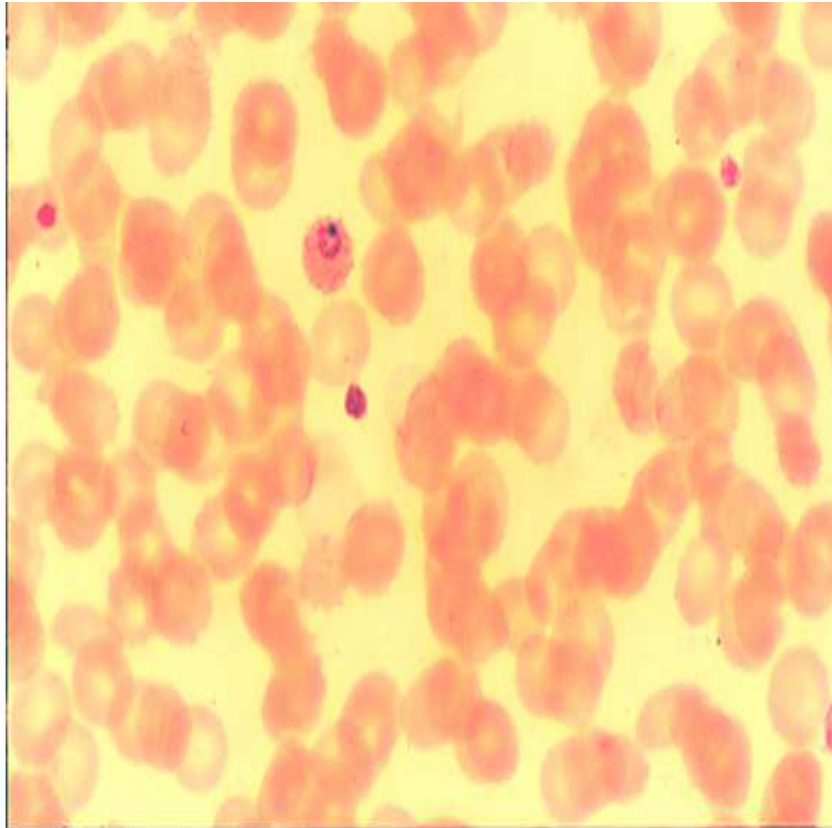


Foto 3 - Anillo de *Plasmodium ovale*

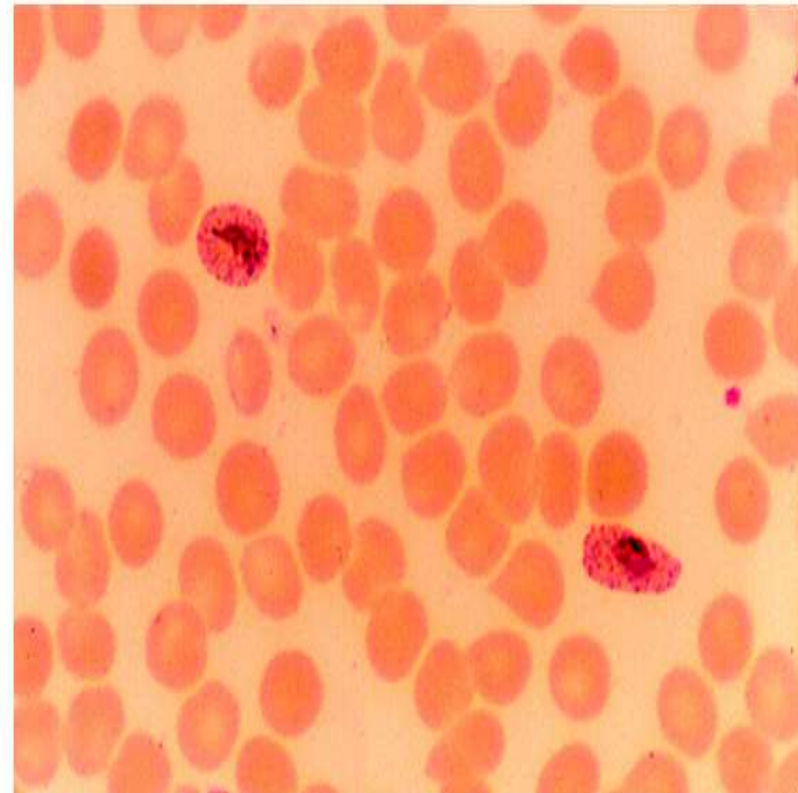


Foto 4 - Trofozoito de *Plasmodium ovale*. Entrocitos en forma de cometa con gránulos de Schüffner

CONTRIBUCION: Dr. José M. Carreón Moldiz (Bolivia)

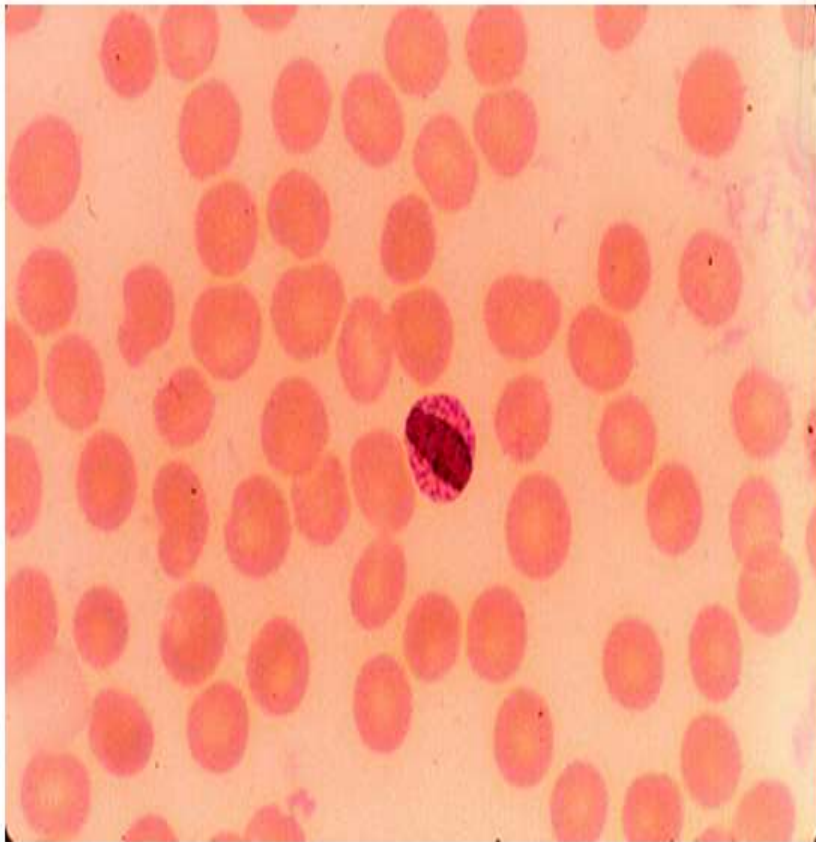


Foto 5 – Trofozoito de *Plasmodium malariae* en forma de banda ancha

aterres@qualitat.cc

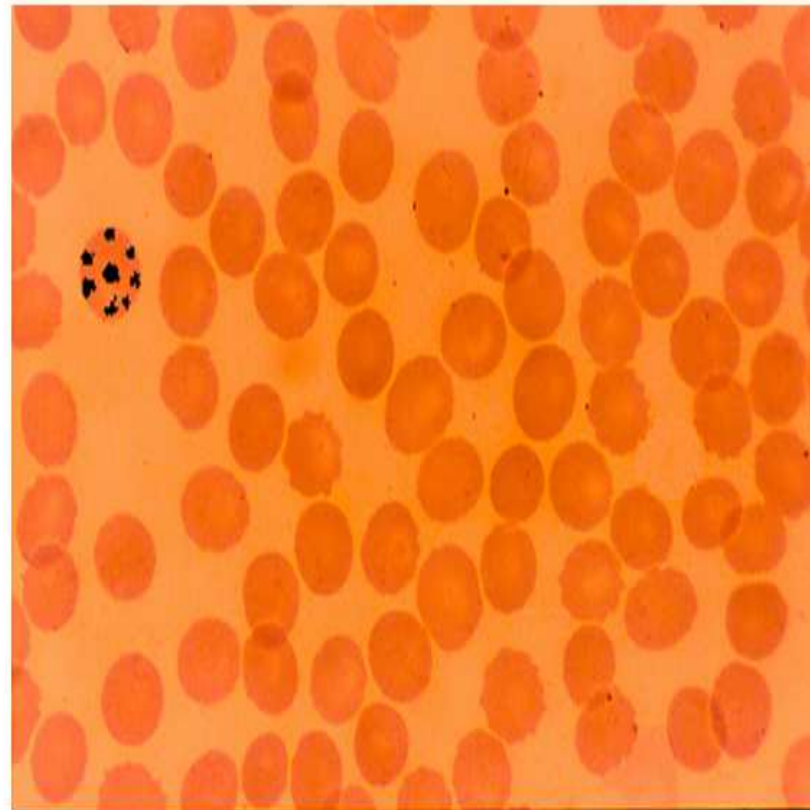


Foto 6 – Esquizonte de *Plasmodium malariae* en forma de roseta

www.qualitat.cc

CONTRIBUCION: Dr. José M. Carreón Moldiz (Bolivia)

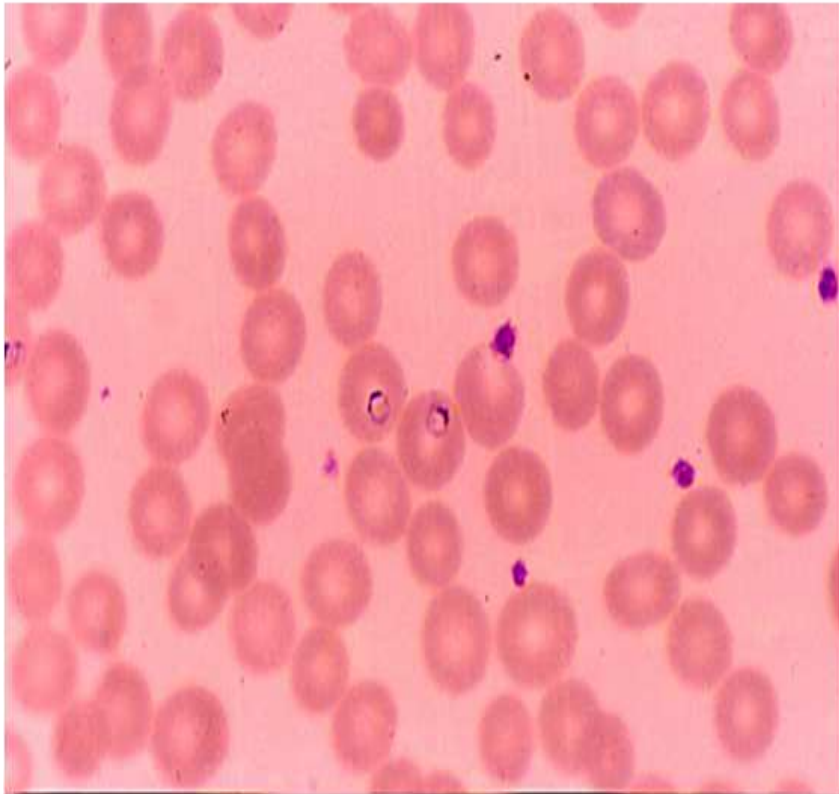


Foto 7 - Anillos finos de *Plasmodium falciparum*

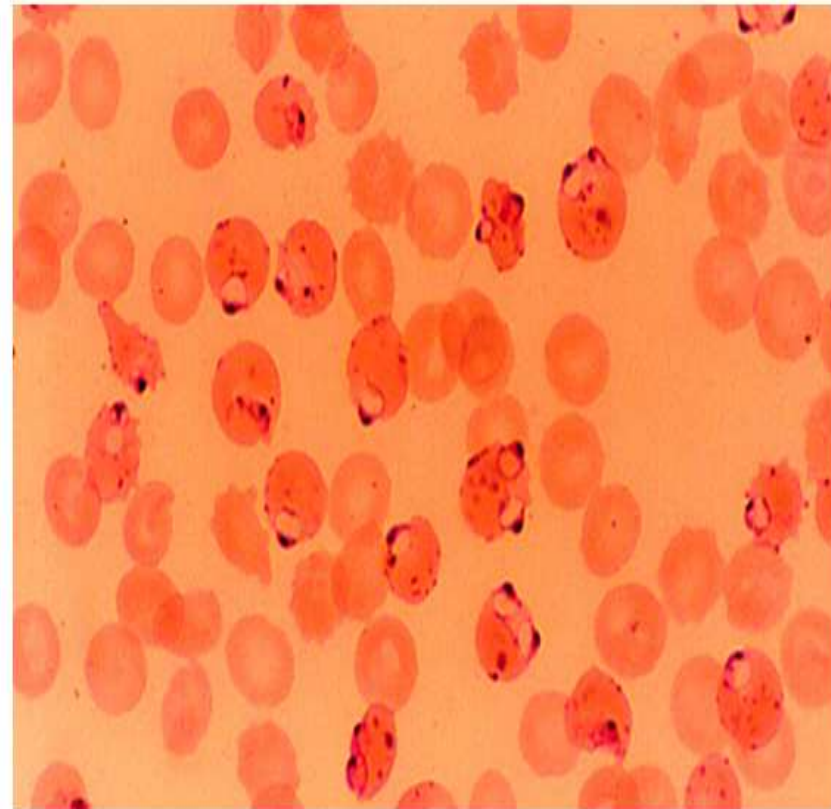
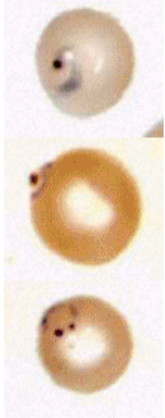

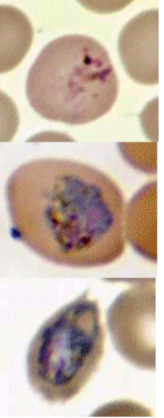
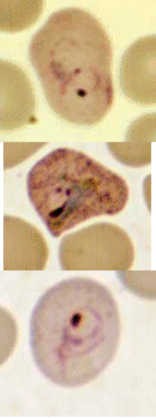
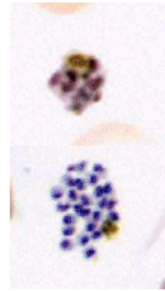
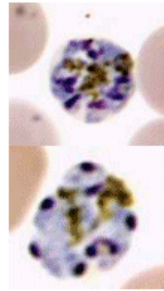
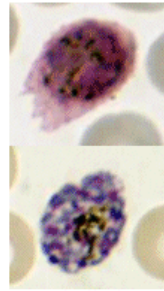
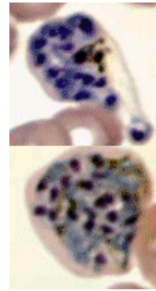
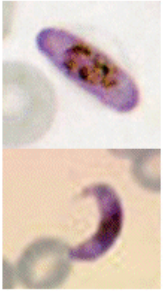
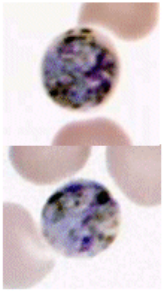
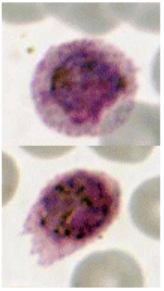
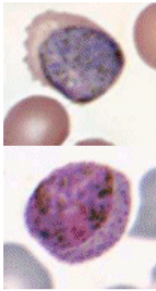


Foto 8 - Anillos marginales de *Plasmodium falciparum*. Infección severa

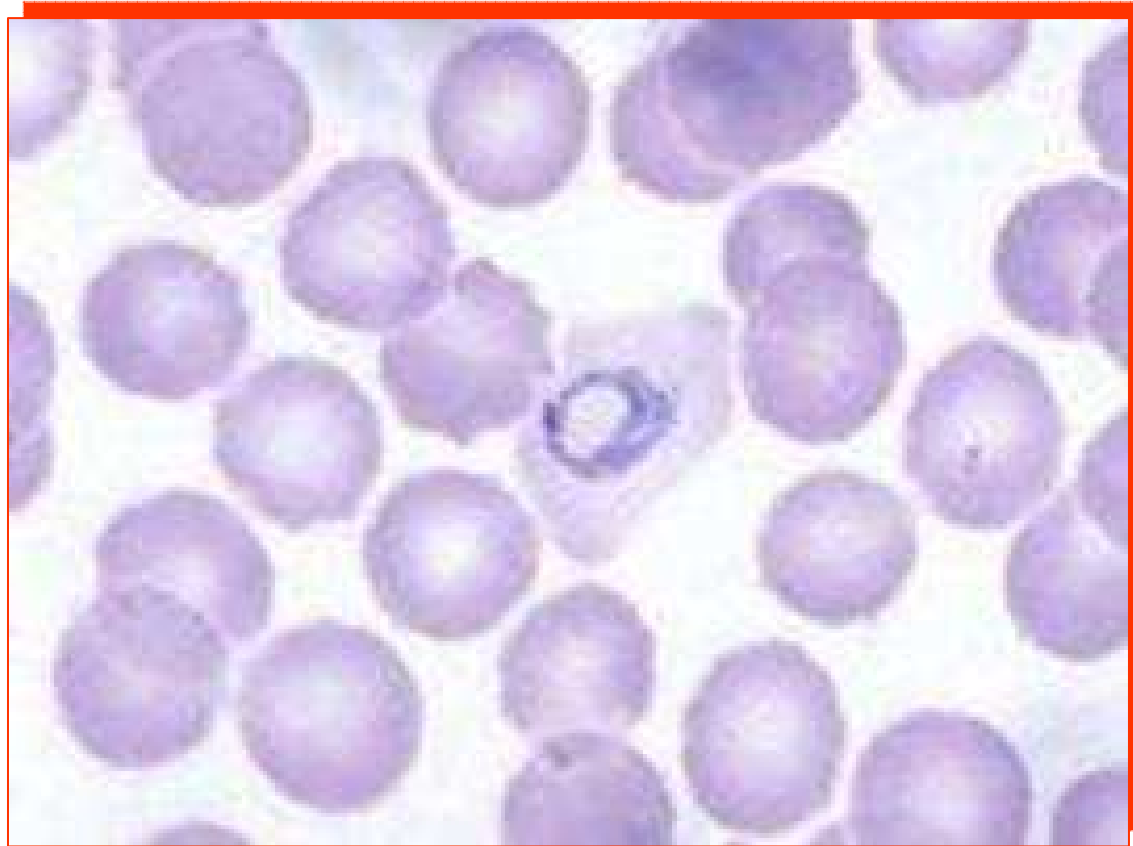
8. Plasmodium sp

<i>P. falciparum</i>	<i>P. malariae</i>	<i>P. ovale</i>	<i>P. vivax</i>
Trofozoítos 	Trofozoítos 	Trofozoítos 	Trofozoítos 
Esquizontes 	Esquizontes 	Esquizontes 	Esquizontes 
Gametocitos 	Gametocitos 	Gametocitos 	Gametocitos 

Gametocito de Plasmodium vivax

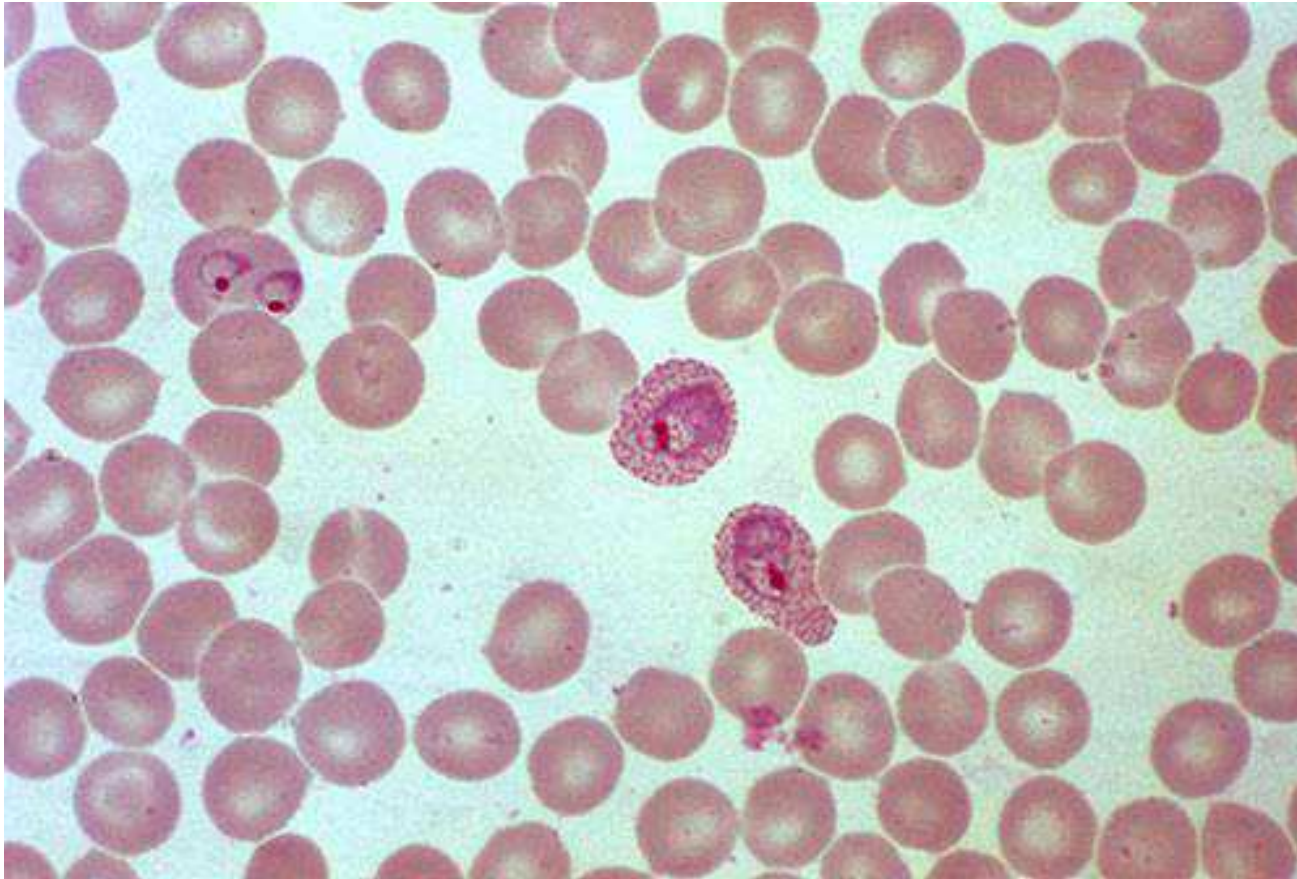


Trofozoito de Plasmodium vivax



Plasmodium ovale.

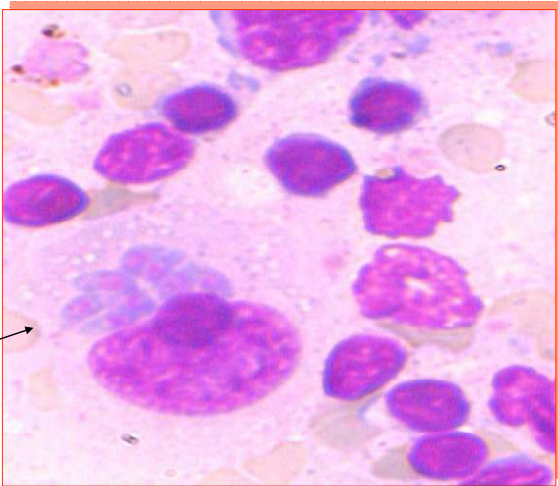
Se observan trofozoitos jóvenes y maduros con Puntos de Maurer y Gránulos de Schuffner.



9. Sarcocystis sp.

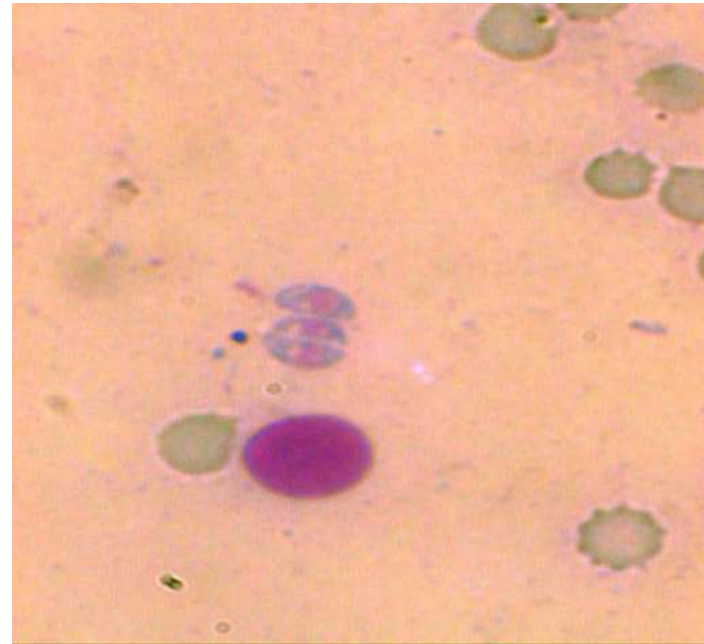
Toxoplasma gondii (MO)

T.gondii



www.qualitat.cc

Toxoplasma gondii (SP)

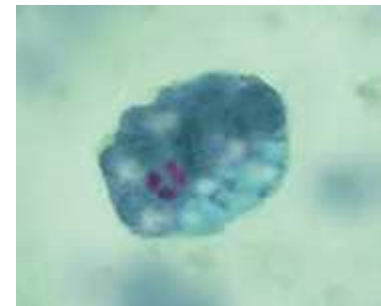
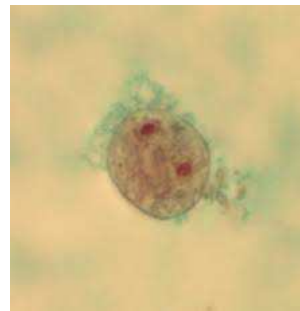


10. FLAGELADOS

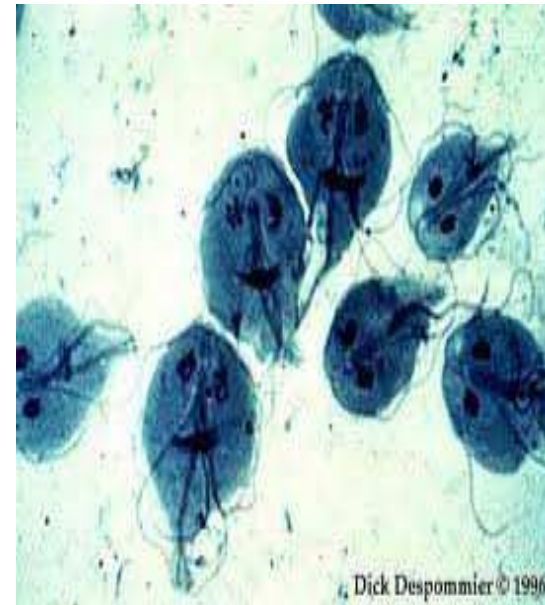
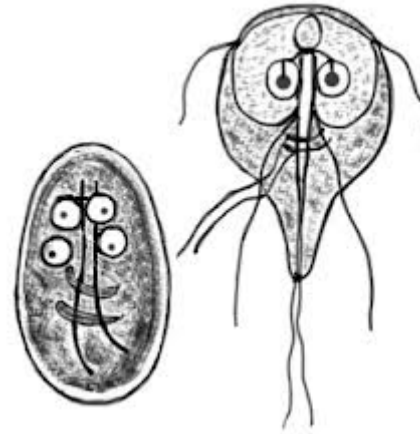
- **Chilomastix mesnili**



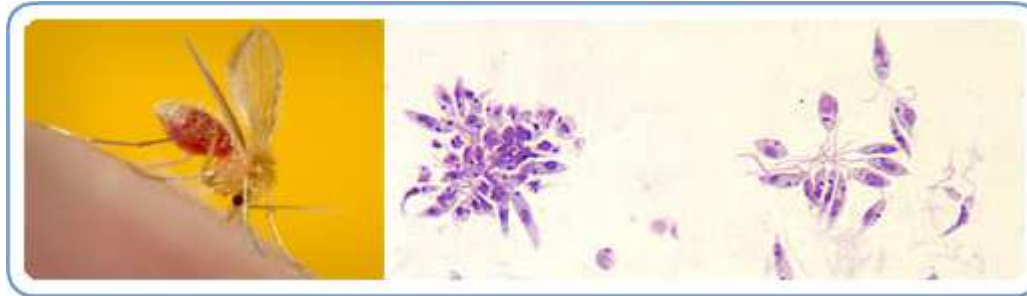
- **Dientamoeba fragilis**



Giardia lamblia



11. Leishmania sp



- Leishmania braziliensis
- Leishmania donovani
- Leishmania mexicana

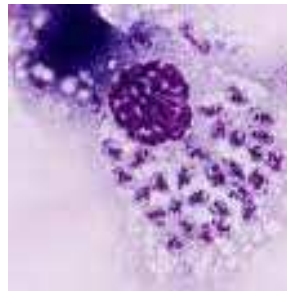
L. visceral

L. cutánea

promastigote



aterres@qualitat.cc



www.qualitat.cc

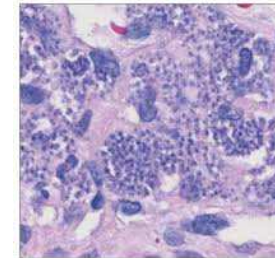
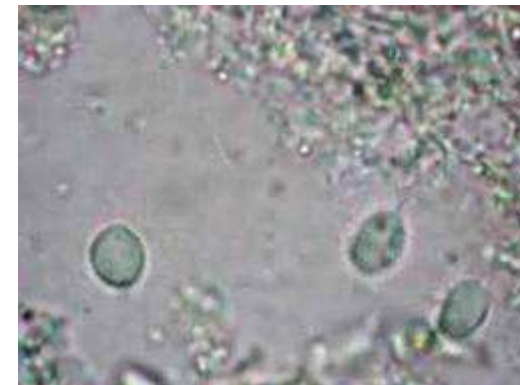
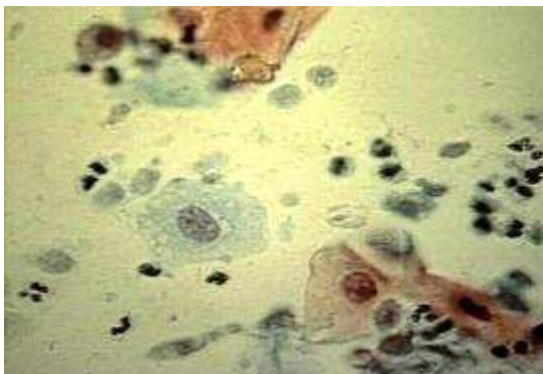
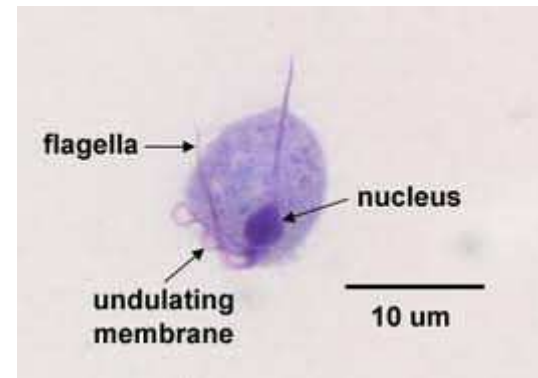
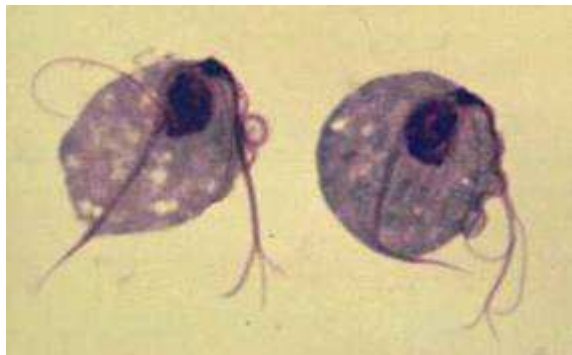


Fig. 1.

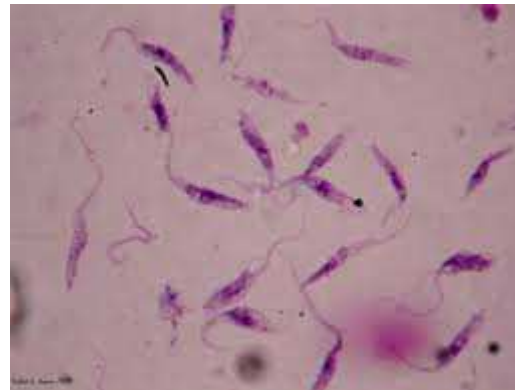
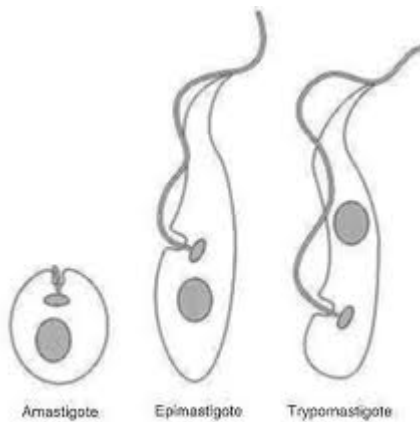
12. Trichomona sp

- **Trichomonas vaginalis**



Trypanosoma sp.

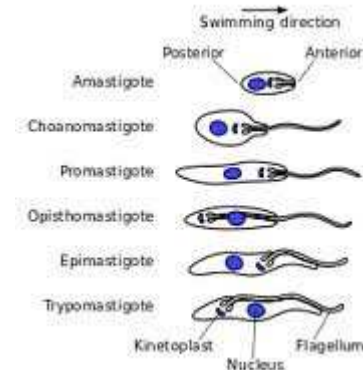
- Trypanosoma cruzi Amastigote
- Trypanosoma cruzi Epimastigote
- Trypanosoma cruzi Tripomastigote



Triatoma



Signo de Romaña



Tripanosoma cruzi

Tripomastigote

